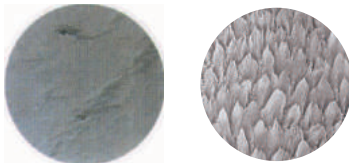


DIAETCH™ 37%

A 37% ETCHING GEL PHOSPHORIC ACID



Before After
(Microphotographs of premolar, X1,000)

A phosphoric acid is used in etch enamel and/or dentin

Benefits

- Phosphoric acid etching of enamel and dentin with ideal thickness
- Quick and effective application to the desired place
- Enables to rinse completely and easily from the tooth surface
- High biocompatibility

Packages

Economic Package Type A

- ITEM #2001-3101 - 5 Syringes x 5ml and 20 disposable tips

Economic Package Type B

- ITEM #2001-3102 - 5 syringes x 3ml and 20 disposable tips

Refill Package Type A

- ITEM #2001-3202 - 1syringe x 5ml and 5 disposable tips

Disposable Tips

- ITEM #2001-6109 - Bag of 100 pcs.

DIASEAL™

A LIGHT CURE PIT & FISSURE SEALANT

Designed for sealing enamel pits and fissures of teeth to prevent caries

Benefits

- UDMA series monomer and Nano-filler offers high flowability, excellent wear resistance and strength
- Optimal viscosity to flow easily and helps for easy application
- Ensures hygienic and easy delivery and outstanding versatility
- High visual verification during application

Packages

Refill Package

- ITEM #2001-5201
- Sealant 1 syringe x 1.2ml
- 5 disposable needle tips



Properties

Mean value and standard deviation of micro-leakage score

Materials	Micro-leakage score (standard deviation)
DiaSeal™	1.0000(1.1094)
U	1.7333(1.4829)
M	0.9167(1.2795)

Thermocycling 500 times, 1% Methylene blue solution

Disposable Tips

- ITEM #2001-6110 - Bag of 100 pcs.